

# Reality of the Targeting Program



VAXXCHOICE AND DR. ANA MIHALCEA PRESENT

## TRUTH BE TOLD SYMPOSIUM

TODD CALLENDER, ESQ.  
ANA MARIA MIHALCEA, MD, PHD  
RICHARD LIGHTHOUSE  
DR. LEN BER  
ANA TOLEDO, ESQ  
MAJOR JEFFREY PRATHER  
SARAH WESTALL - MC

Targeted Individuals

FRIDAY 1.26.24 12PM-3PM ET LIVE Q&A ON CLOUTHUB @VAXXCHOICE





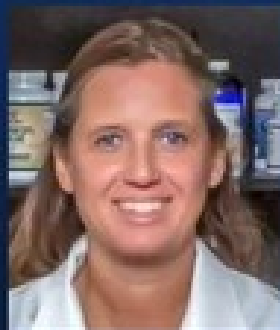
# Educational Symposium:

## “Reality of the Targeting Program”

### Featured Speakers:



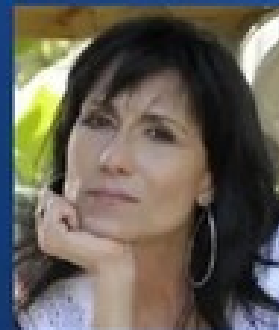
Richard  
Lighthouse



Dr Ana Mihalcea  
MD, PhD



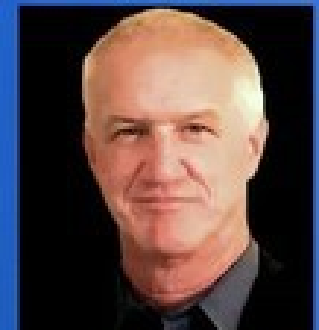
Dr Len Ber  
MD



Ana  
Toledo, Esq.



Todd Callendar,  
Esq.



Maj. Jeffrey  
Prather

**Friday, Jan 26<sup>th</sup>, 12 – 3pm ET**

**[clouhub.com/@vaxxchoice](https://clouhub.com/@vaxxchoice)**

# Reality of the Targeting Program



[TargetedJustice.com](http://TargetedJustice.com)



# Reality of the Targeting Program



## Richard Lighthouse

B.S. - Aerospace Engineering, Texas A&M University

M.S. - Mechanical Engineering, Stanford University

- Previously worked for NASA
- Spent 20+ years in the energy industry as Director or Vice President.
- Author of 150+ technical papers & ebooks  
many on amazon.com, barnesandnoble.com, etc

[www.RLighthouse.com](http://www.RLighthouse.com)

[Independent.academia.edu/RichardLighthouse](http://Independent.academia.edu/RichardLighthouse)



# Reality of the Targeting Program



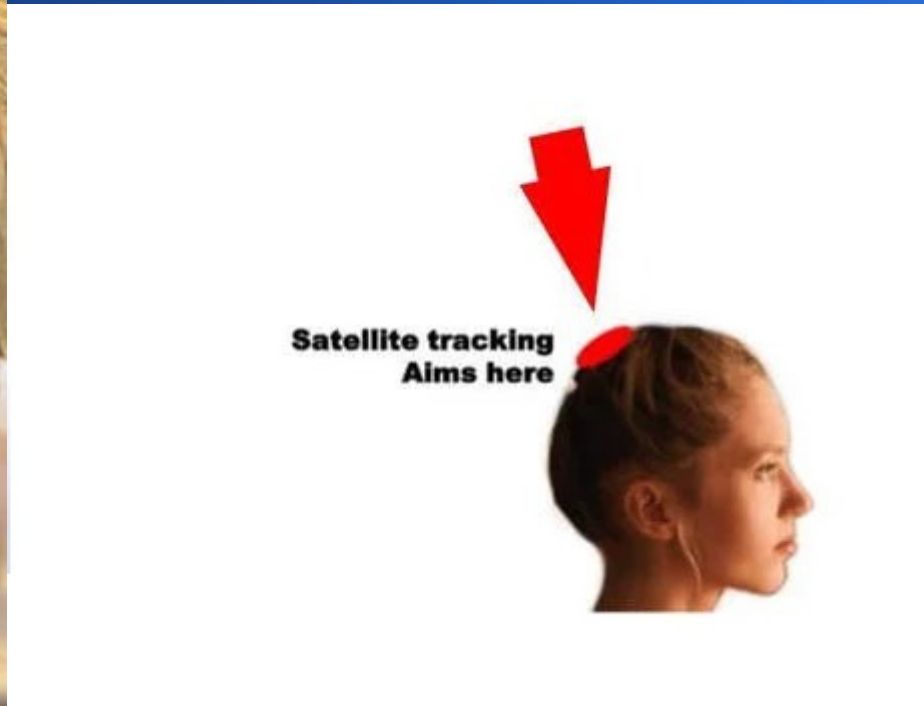
CIA's MK-Ultra & FBI's CointelPro form the basis of the targeting program.

- Designed to neutralize the person, using emotional, psychological, and physical stress & covert means.

<https://www.targetedjustice.com/cia--mk-ultra.html>

**Terrorist Screening Database (TSDB) was set up in 2003 under Executive Order HSPD-6 by President Bush Jr.**

# Everyone is being tracked.



Everyone in the United States is being tracked with microwave pulses from Lockheed and Boeing GPS satellites. Microwave GPS tracking can cause head injuries.





**1.** Satellite tracking.

Scalar microwave beam @ 3200 - 3750 MHz

**2.** Relay GPS coordinates to Schriever Base.

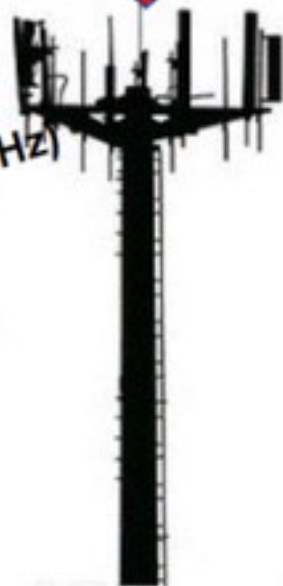


Schriever Space Force Base

# How U.S.S.F. Tracks Everyone



**3.** Supercomputer relays to Cell Tower.



**4.**

Subliminal messages 24/7, directed at head, and ringing in ears. (450 - 700 MHz)  
Patent # 4,877,027

Counter Effect:  
"I will only react to constructive suggestions."

Satellite tracking Aims here



References:  
**Akwei vs. NSA (1992)**  
Space-track.org  
Gps.afspc.af.mil

[In-The-Sky.org/satmap\\_radar.php](http://In-The-Sky.org/satmap_radar.php)

Opinions of RLighthouse.com  
Jan 2022, Rev 3.5  
Creative Commons 4.0 License

# TargetedJustice.com



# How do I know if I'm a Targeted Individual?



## Ear Cup Test:



In a very quiet room, cup your ears for 60 seconds. Listen for the microwave “pops.” This is a tracking signal used from cell towers. You can also use a stethoscope placed behind the ear - to listen to yourself or someone else.



# Reality of the Targeting Program



## 4 Main Elements of Harm

### 1. Gangstalking

Organized stalking adopted from stasi tactics of German secret police after WWII. Emotional & psychological trauma. About 91% of our members report this.

### 2. Directed Energy Weapons (DEW)

Satellites & Cell towers - uses scalar waves and microwave beamforming. Vircators were built by the Titan Corp and launched beginning in 1984. About 87%

### 3. Voice-to-Skull (V2K)

Constant derogatory and destructive voices. No method to block it. The technology uses cell towers for microwave beamforming. About 65%

### 4. Microwave rape

Microwave beamform directed at genitals. Most traumatic of the elements and affects both women and men. % unavailable

# Reality of the Targeting Program

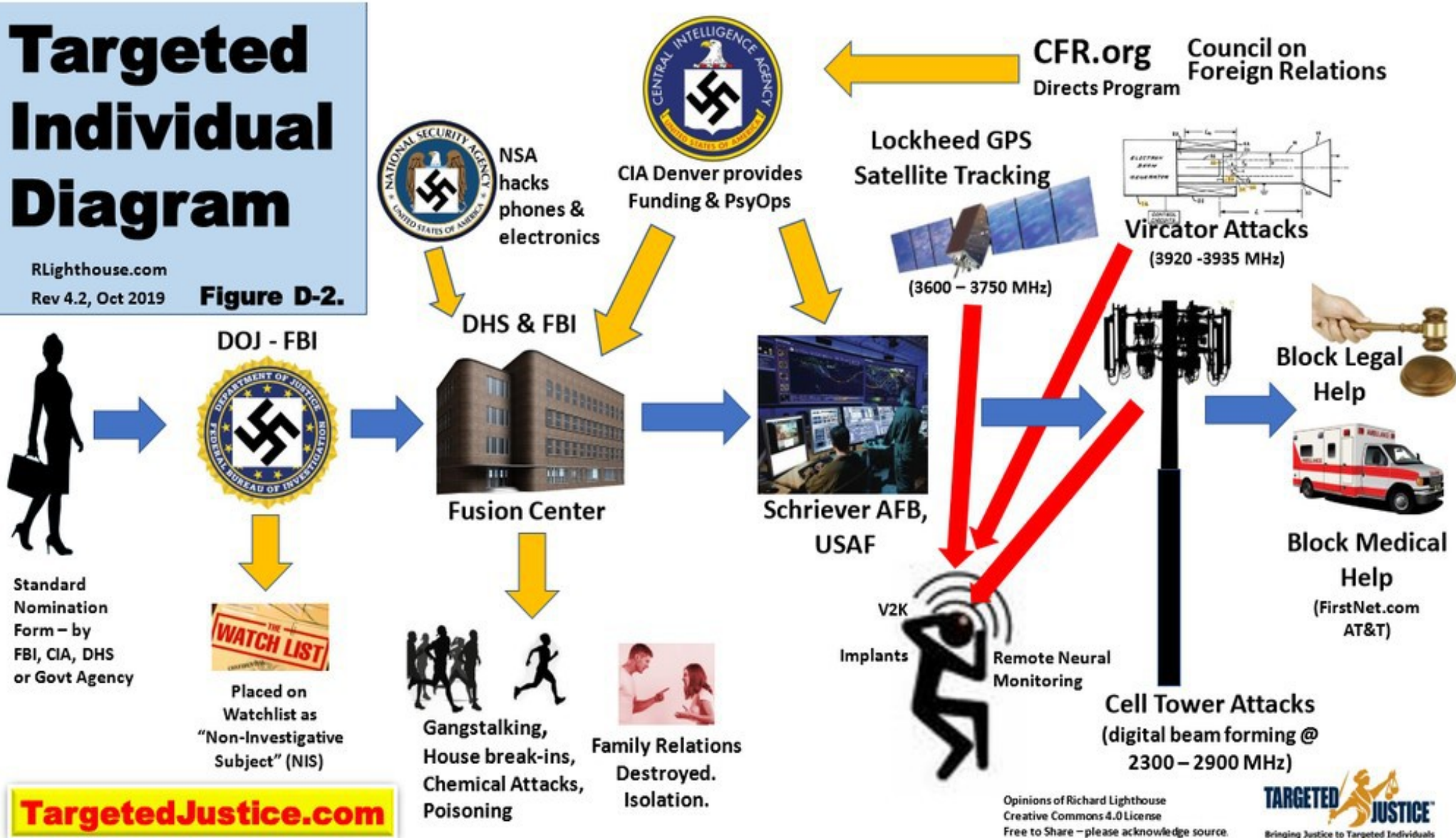


Figure D-2

## Targeted Individual Diagram

RLighthouse.com  
Rev 4.2, Oct 2019

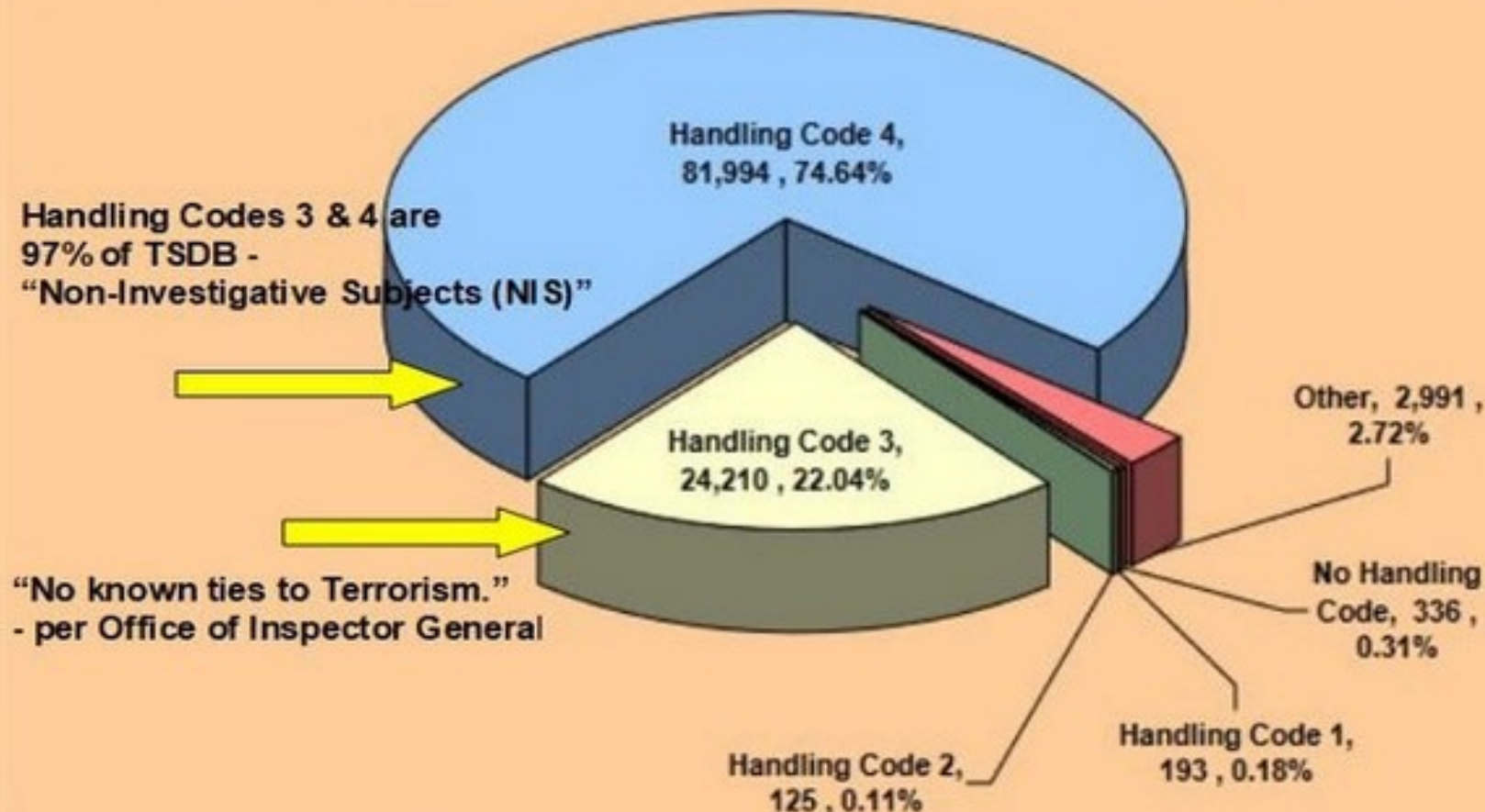
Figure D-2.





# Watch Listed Persons by Handling Code

(Based on the subset of 109,849 records reviewed<sup>11</sup>)



## Notes on the TSDB:

Note 1: 97% of the TSDB names have "no known ties to terrorism." - per Inspector General (OIG).

Note 2: TSDB has never been used to stop an act of terrorism - per FBI Agent sworn testimony.

Note 3: Children, as young as 3 years old, are listed on TSDB as "suspected terrorists."

FIG. P-1

TargetedJustice.com



# Reality of the Targeting Program



## FBI's Terrorist Screening Database (TSDB)

- Distributed to 60 countries
- 18,000 Police & Sheriff Depts
- 1,440 Private companies

**Watchlist categories** - shared with airlines

Category 1 - No-Fly list. Arrest immediately. (0.18%)

Category 2 - Suspected terrorist. Enhanced screening. (0.11%)  
Boarding Code "SSSS."

No known ties to  
Terrorism, per OIG.

**Blacklist categories** - distributed thru NCIC

Category 3 - Aware Targeted Individual. (22%)

Category 4 - Unaware Targeted Individual. (75%)

Category 5 - Financial crimes and political persecution. (less than 1%)

Category X - Used to protect elite globalists. Instructs police "Do not arrest or detain."  
(source: Aaron Russo)

97% of TSDB is  
Non-Investigative  
Subjects (NIS)

FIG. T-1

TargetedJustice.com



# Reality of the Targeting Program



Directed Energy Weapons (DEW) -  
Microwave Burns

<https://www.targetedjustice.com/microwave-burns.html>



Arizona



New York



Germany



# Overview of Targeted Individual Program

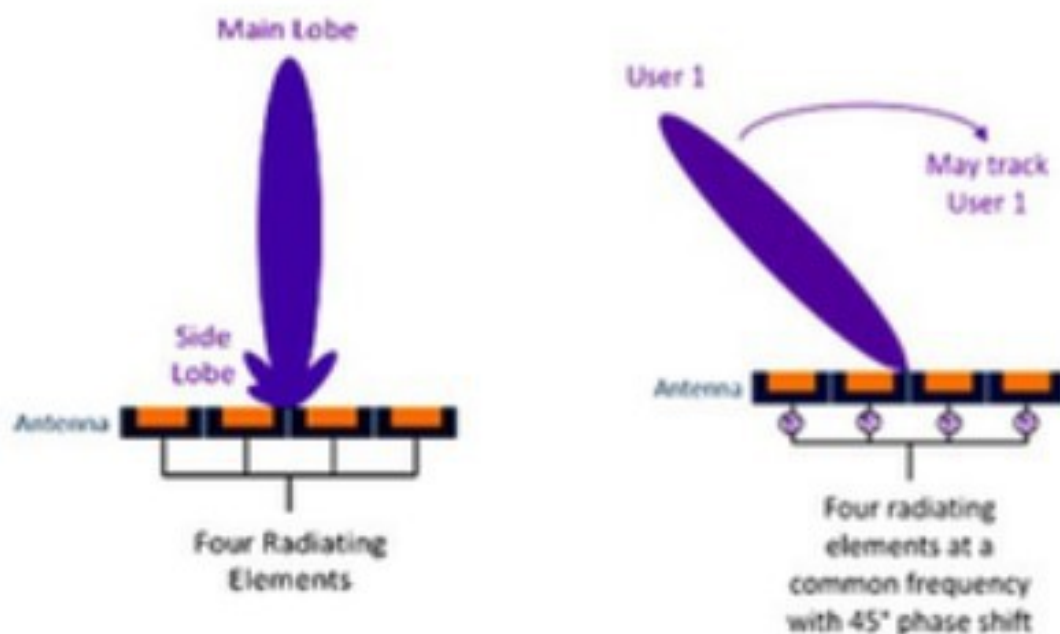
Figure P-2.

Rockefellers, Rothschilds, etc.





# Panel Antennas are a Weapon System



**Digital Beamforming** using 4 panel antennas on a **cell tower**. The main lobe has a typical range of 5+ miles, and can go thru many buildings to hit a target.

**Beam Steering & MIMO** allow the antennas to track and hit many targets at the same time, by using high-speed pulsing, or different frequencies.

**TargetedJustice.com**

Opinions of TargetedJustice.com

June 2021, Rev 1.2

Creative Commons 4.0 License – free to share

RLighthouse.com

Figure PA-1

# Schriever Space Force Base

## Colorado Springs, Colorado



**Joint Interagency Combined Space Operations Center, or JICSpOC, at Schriever Base.**



# Who's Responsible?



## Squadron Superintendent, 4th Space Operations Squadron

United States Air Force

Aug 2016 – Jul 2017 • 1 yr

Schriever AFB, CO

Senior Enlisted Leader of 216 person unit providing secure and reliable satellite communications via the MILSTAR and Advanced EHF satellite constellations. Primary advisor to the squadron CC on operations and readiness issues. Managed manning and personnel and resource utilization efforts for the unit. Served as the unit's interface with base leadership and advocate for unit personnel on recognition. Ensured good order and discipline of unit personnel through direct engagement, mentoring and professional development. Performed Group Superintendent duties >70 days; led 1.3K personnel/9 weapon sys/5 CPI events- solidified 9x wing annual award wins

From the LinkedIn resume of Sargent Charles Surchay at Schriever AFB in 2017.

Note the reference to 1,300 operations personnel with 9 different weapon systems in orbit.



# Who's responsible?



From resume of Jon Slaughter – Space Weapons Officer

Browser address bar: [https://www.linkedin.com/in/jon-patrick-\"weezer\"-slaughter-8619817b/](https://www.linkedin.com/in/jon-patrick-\)

LinkedIn navigation: Home, My Network, Jobs, Messaging

**Jon Patrick \"Weezer\" Slaughter**  
United States Space Force | Vice Commander Space Delta 3 | **Space Weapons Officer**

### Experience

- Vice Commander**  
United States Space Force - Space Operations Command - Space Delta 3 · Full-time  
Jun 2020 - Present · 1 yr 9 mos  
Colorado Springs, Colorado, United States  
**Second-in-command of DoDs sole Space Electromagnetic Warfare focused Delta.**
- Squadron Commander**  
United States Air Force - Air University - Squadron Officer School - 31st Student Squadron · Full-time  
Jun 2018 - Jun 2020 · 2 yrs 1 mo

# Who's responsible?



## Confession of guilt:

“AFSPC (Air Force Space Command) is the sole provider of positioning, navigation, and timing, as well as the bulk of satellite communications to the warfighting community.”

<http://www.afspc.af.mil/About-Us/Heritage/2000-2007/>

Blockbuster by Dr Bill Deagle, MD - 5 minute video:

<https://www.targetedjustice.com/key-evidence.html>



# Do the megaphone test!



Megaphone detects electromagnetic fields in your body.

- The megaphone "shrieks" next to EM field.
  - Should not be any measurable EMF in your body.
1. COVID shots - the nano-graphene has spread, or
  2. You have illegal implants placed in your body.
  3. This cannot be faked.



**Pyle Megaphone (\$15)**

**10 second video demonstration:**

<https://www.targetedjustice.com/megaphone-demo.html>





# Reality of the Targeting Program



## Thank You!

More questions? [TJustice2@proton.me](mailto:TJustice2@proton.me)

[TargetedJustice.com](https://TargetedJustice.com)

[RLighthouse.com](https://RLighthouse.com)

Newsletter: [TargetedJustice.substack.com](https://TargetedJustice.substack.com)



**Richard Lighthouse**